

Paper Cutter

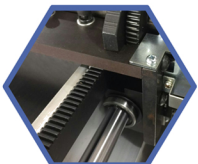
490EM/550GH/670GH



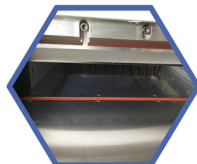
SPECIFICATIONS

	490EM	550GH	670GH
Display:	LCD+Keyboard	Touch scree	Touch screen
Cut width:	35-490mm	35-550mm	35-670mm
Cut thickness:	60mm	80mm	8mm
Accuracy:	+/-0.3mm		
Clamp:	Electronic	Hydraulic	Hydraulic
Push:	Programmable		
Job Qty:	99 (every job upto 16 steps)		
Safety mode:	Infrared sensor		
Power:	220V-240V/50Hz-60Hz		
Weight:	250kg	304KG	360KG
Machine size:	100*81*120cm	112*152*127cm	12*152*127cm

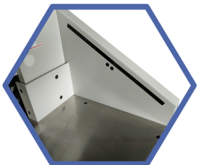
FEATURES



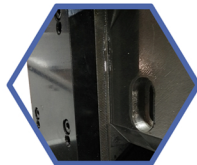
1. Dual gear and rail paper pushing system more smooth and accurate (490EM only)



2. Oblique and optical cutter movement, improve the cutting capacity and accuracy



3. Safety IR sensor, Provide more security protection



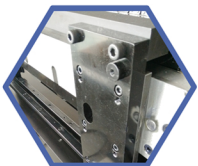
4. Clamp made of powder metallurgy more wear resisting and durable



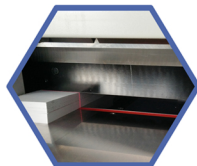
5. Easy cutter adjustment Adjust cutter position from side panel easily



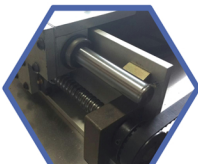
6. Standard equipped support table



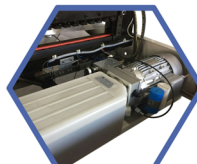
7. Heavy integral steel structure design Precise processing technology and Professional cutting accuracy (490EM only)



8. Clamping system guided on two sides the clamping and aligning is more even



9. Dual ball screw rod and rail paper pushing system more smooth and accurate (550GH, 670GH only)



10. Leading hydraulic system Smaller size and Greater power hydraulic system, provide more storage space than other machine (550GH, 670GH only)